

# Interesting Hornpipes for Anglo Concertina

Collected by Michael Eskin

# Table of Contents

|                  |   |
|------------------|---|
| The Beeswing     | 1 |
| The Golden Eagle | 2 |
| The Independence | 3 |
| Paddy Fahey's    | 4 |
| The Poppy Leaf   | 5 |
| The Stage        | 6 |

# The Beeswing

hornpipe

♩ = 140

The musical score for 'The Beeswing' hornpipe consists of four staves of music. The key signature is one sharp (F#) and the time signature is 4/4. The tempo is marked as ♩ = 140. The first staff begins with a triplet of eighth notes. The second staff features a first ending bracketed over the final two measures, with a second ending bracketed over the final measure. The third staff contains several triplet markings over groups of eighth notes. The fourth staff also includes first and second ending brackets. The piece concludes with a double bar line.

<<

# The Golden Eagle

hornpipe

♩ = 140

The musical score for 'The Golden Eagle' is written for hornpipe in G major (one sharp) and 4/4 time. It consists of four staves of music. The tempo is marked as ♩ = 140. The first staff begins with a triplet of eighth notes. The second staff ends with a repeat sign. The third staff begins with a repeat sign and contains several triplet markings. The fourth staff ends with a repeat sign. There are double bar lines at the end of the second and fourth staves. A double less-than sign (<<) is located to the left of the fourth staff.

# The Independence

hornpipe

♩ = 140

The musical score for "The Independence" is written for hornpipe in 4/4 time with a key signature of one sharp (F#). The tempo is marked as ♩ = 140. The score consists of six staves of music. The first staff begins with a treble clef, a key signature of one sharp, and a 4/4 time signature. It features a series of eighth notes, some grouped in triplets (indicated by a '3' below the notes). The second staff includes a first ending bracket labeled '1' and a second ending bracket labeled '2'. The third staff continues the melodic line with more triplet markings. The fourth staff is preceded by a double bar line with two left-pointing chevrons (<<), indicating a section change or a specific performance instruction. The fifth staff continues the melody with triplet markings. The sixth staff concludes the piece with a first ending bracket labeled '1' and a second ending bracket labeled '2', ending with a double bar line.

# Paddy Fahey's

hornpipe

♩ = 140

Musical score for Paddy Fahey's hornpipe, featuring treble clef, key signature of one sharp (F#), and a tempo of 140. The score consists of four staves of music. The first staff begins with a treble clef, a key signature of one sharp, and a 4/4 time signature. It contains a series of eighth notes with several triplet markings (indicated by a '3' above the notes). The second staff continues the melody and includes first and second endings, marked with '1' and '2' above the staff. The third staff features a series of eighth notes with triplet markings. The fourth staff concludes the piece with first and second endings. The key signature remains one sharp throughout. The tempo is indicated as 140 beats per minute.

<<

# The Poppy Leaf

hornpipe

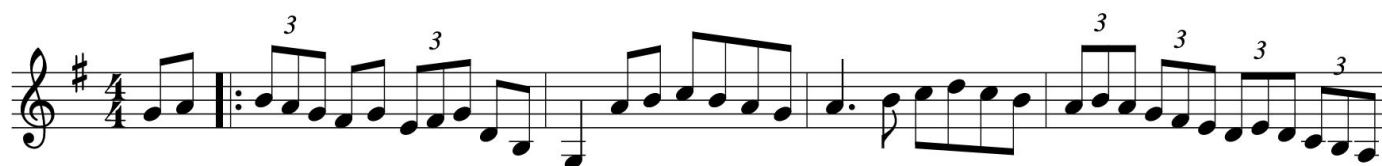
♩ = 140

The musical score for 'The Poppy Leaf' is written for hornpipe in G major (one sharp) and 4/4 time. The tempo is marked as ♩ = 140. The score consists of four staves of music. The first staff begins with a repeat sign and a triplet of eighth notes. The second staff ends with a repeat sign. The third staff begins with a repeat sign. The fourth staff features several triplet markings over groups of eighth notes. The piece concludes with a repeat sign at the end of the fourth staff.

# The Stage

hornpipe

♩ = 140



<<

